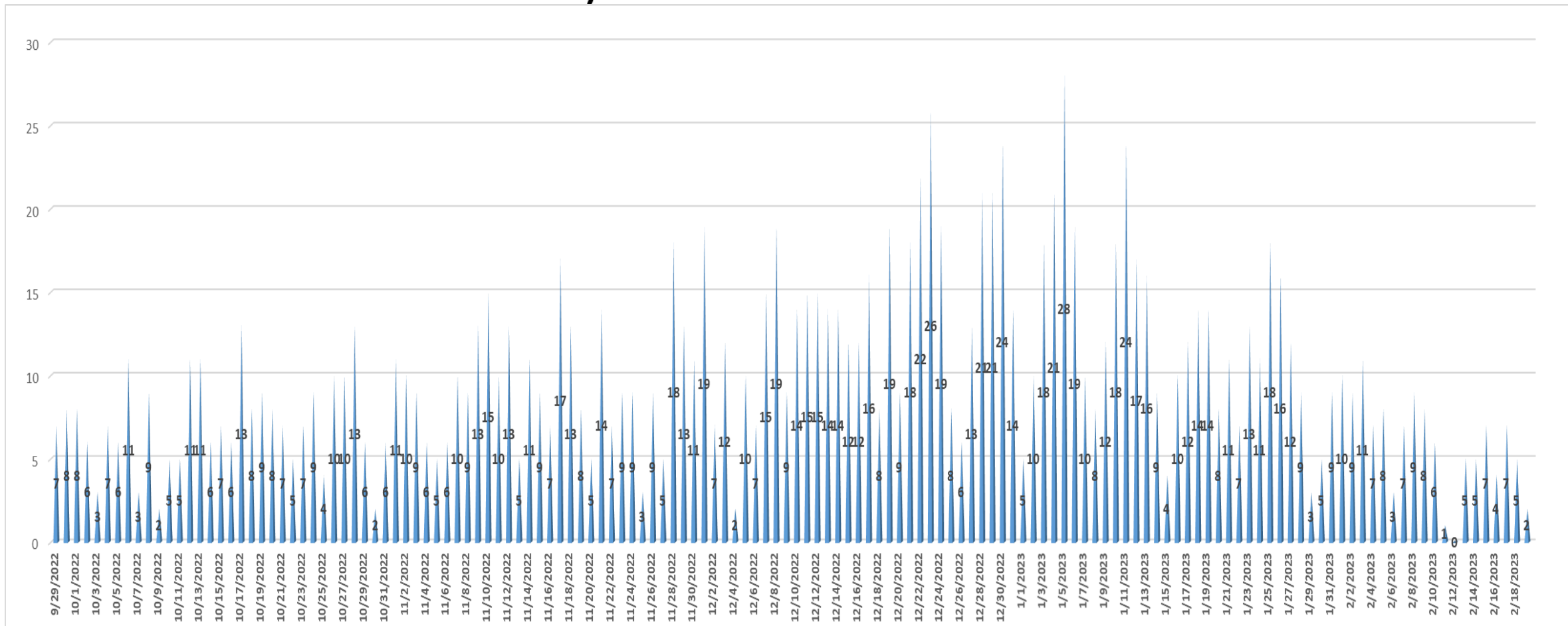


Daily

City of Passaic Covid-19 Cases

CASES



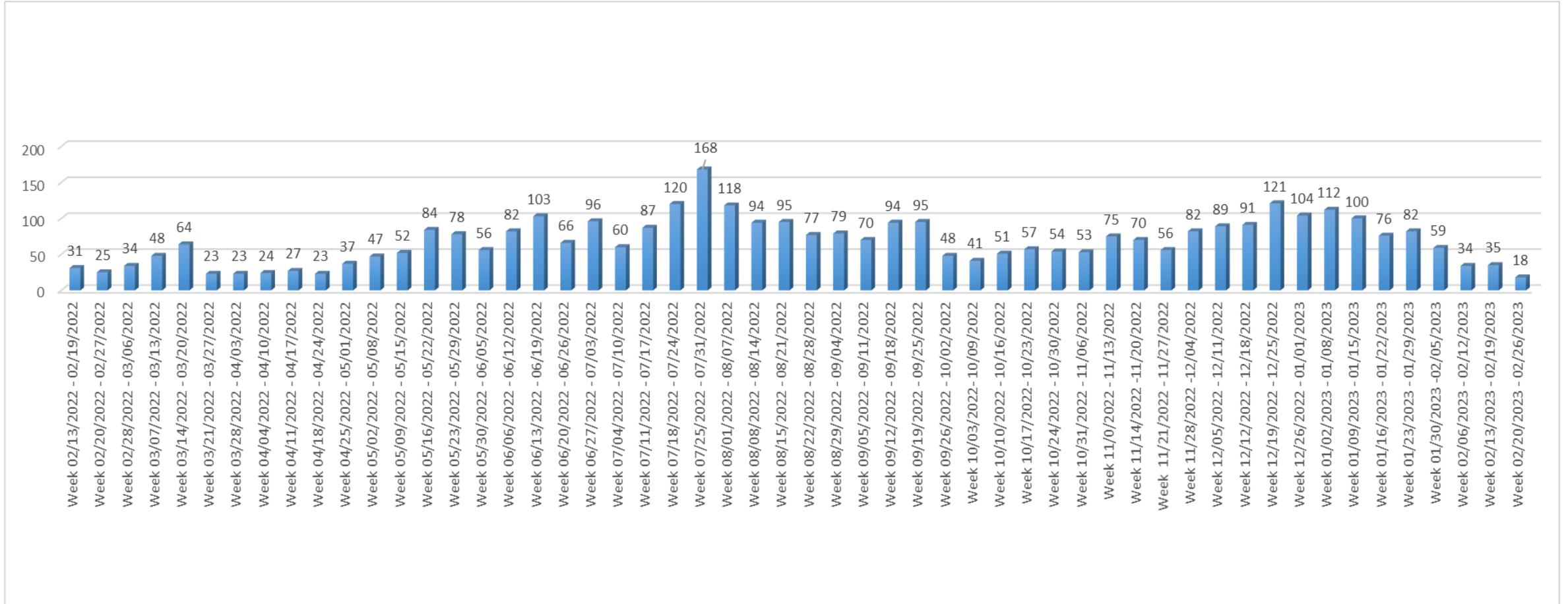
September 29, 2022–February 19, 2023

**Case numbers are subject to change, as data is further investigated/reviewed by New Jersey Department of Health (NJDOH), County Health Department, and City of Passaic Division of Health: numbers may be reduced due to cases being transferred out of jurisdiction, duplicate cases merged, and/or NJDOH changes to case definitions.*

Weekly

City of Passaic Covid-19 Cases

CASES



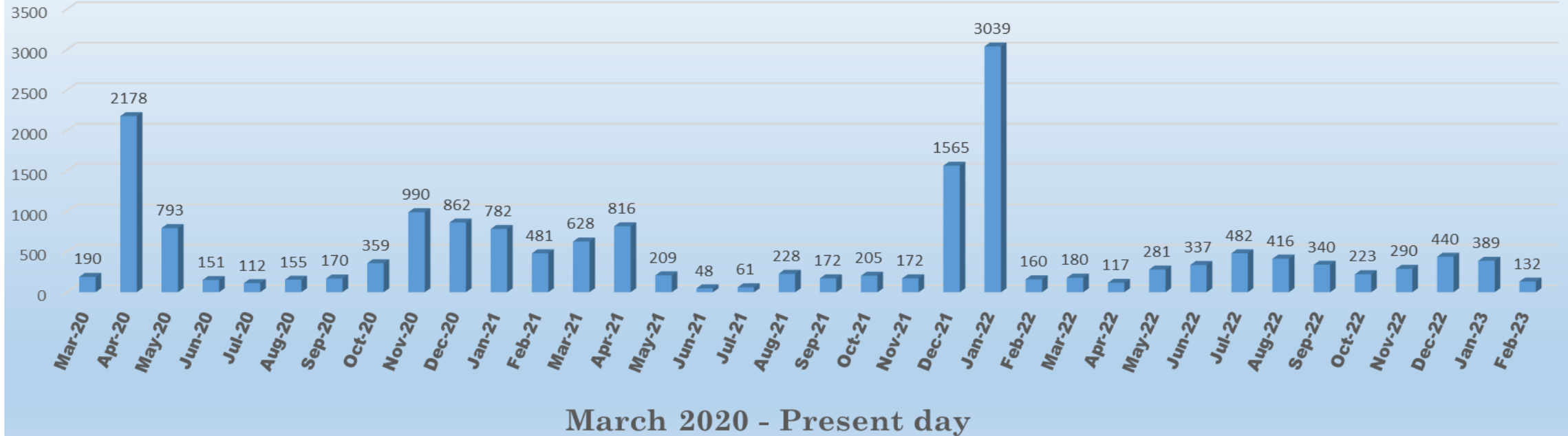
February 13, 2022– February 26, 2023

**Case numbers are subject to change, as data is further investigated/reviewed by New Jersey Department of Health (NJDOH), County Health Department, and City of Passaic Division of Health: numbers may be reduced due to cases being transferred out of jurisdiction, duplicate cases merged, and/or NJDOH changes to case definitions.*

Monthly

Passaic Covid-19 Cases

CASES



**Case numbers are subject to change, as data is further investigated/reviewed by New Jersey Department of Health (NJDOH), County Health Department, and City of Passaic Division of Health: numbers may be reduced due to cases being transferred out of jurisdiction, duplicate cases merged, and/or NJDOH changes to case definitions.*